

CASE SPECIFICATIONS:

REFRIGERATION

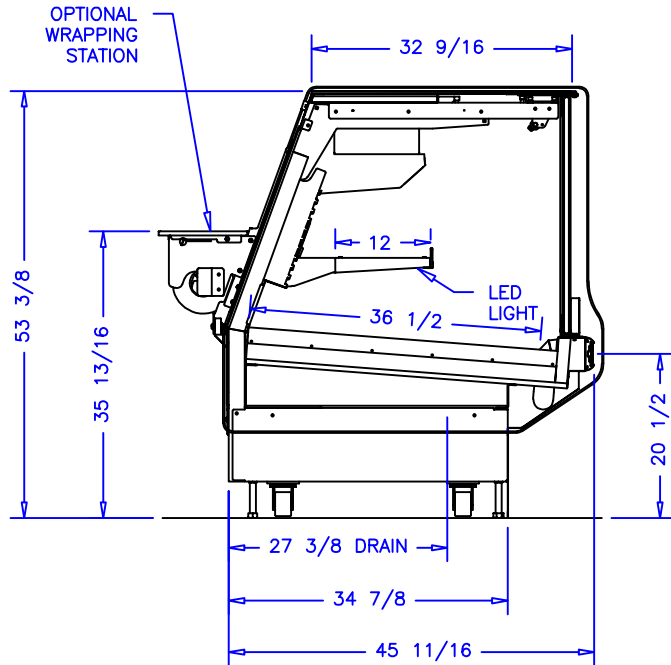
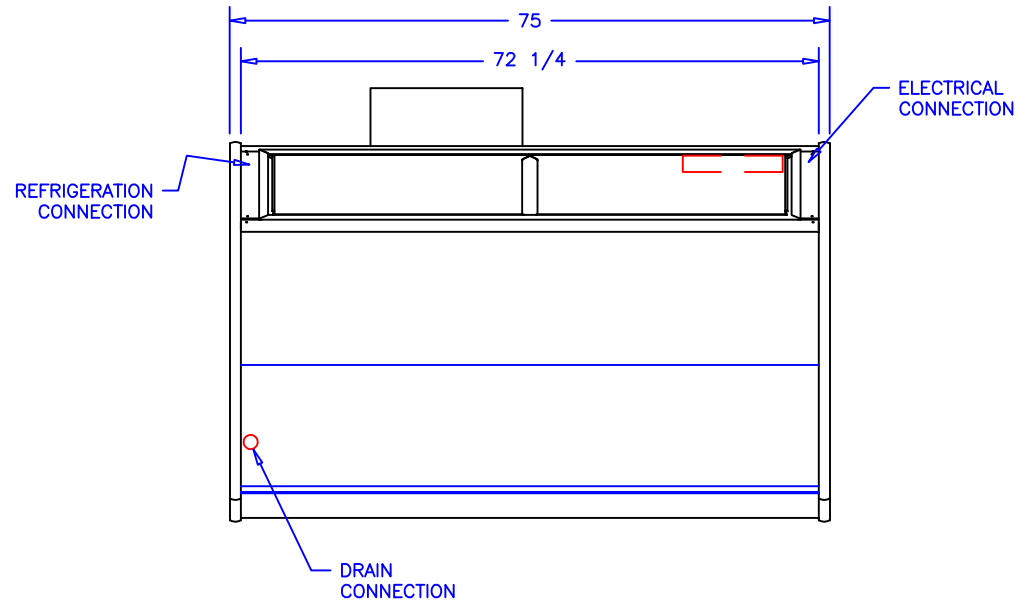
LOAD: 2,820 BTU/hr  
 SUCTION TEMP: 17° F  
 LIQUID LINE: 3/8IN ODS  
 SUCTION LINE: 5/8IN ODS

ELECTRICAL 115VAC, 60HZ, 1PH.

LED LIGHTS: 2.4A

TOTAL: 2.4A


MCA: 15.0A



NOTES:

1. OPTIONS NOT SHOWN ON DRAWING SHOULD BE LISTED IN WRITTEN PROPOSAL AND LISTED ON PURCHASE ORDER.
2. ELEC. CONNECTION: 115V/230V, 4x4 SUPPLY BOX AS NEEDED.
3. EXPANSION VALVES: SPORLAN "Q" SERIES STANDARD UNLESS OTHERWISE SPECIFIED.
4. DEFROST CONTROL: REMOTE CASES (N/A, DIGITAL CASE CONTROLLERS AVAILABLE), OPTIONAL CONDENSING UNIT (DIGITAL CASE CONTROLLER).
5. THERMOSTATS & LIQUID LINE SOLENOID VALVES: OPTIONAL.
6. DRAIN: 1 1/2 INCH PVC.
7. SPECIFICATIONS SUBJECT TO CHANGE WITHOUT NOTICE.



AUTHORIZATION (PRINT):		DATE:		 <b>börger systems</b>	
SIGNATURE:					
				SCALE: 1:24	DRAWN BY: D HUNT
				DATE: 10-5-20	CHECKED BY:
		6FT JEWEL SERV. GRAVITY DFT			
DATE	REV.	DIM:	INCH		
REVISION	TOL:			DRAWING NUMBER P7987	