

DOORED CASE SPECIFICATIONS:

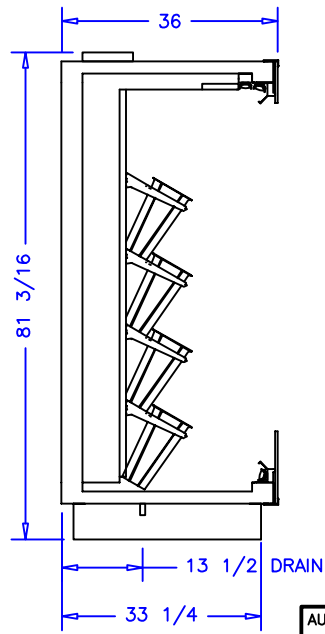
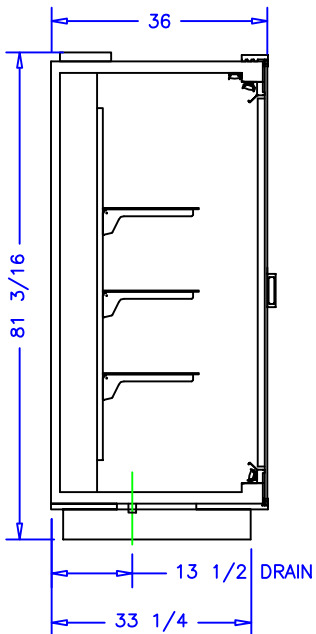
REFRIGERATION
 LOAD: 5,200 BTU/hr
 SUCTION TEMP: 25° F
 LIQUID LINE: 3/8IN ODS
 SUCTION LINE: 5/8IN ODS

ELECTRICAL 115VAC, 60HZ, 1PH.
 EVAP. FANS: 0.60A
 LIGHTS: 2.4A
 TOTAL: 3.0A
 MCA: 15.0A

OPEN CASE SPECIFICATIONS:

REFRIGERATION
 LOAD: 9,450 BTU/hr
 SUCTION TEMP: 22°
 LIQUID LINE: 3/8IN ODS
 SUCTION LINE: 5/8IN ODS


ELECTRICAL 115VAC, 60HZ, 1PH.
 EVAP. FANS: 0.90A
 LIGHTS: 2.4A
 TOTAL: 3.3A
 MCA: 15.0A



NOTES:

1. OPTIONS NOT SHOWN ON DRAWING SHOULD BE LISTED IN WRITTEN PROPOSAL AND LISTED ON PURCHASE ORDER.
2. ELEC. CONNECTION: 115V/230V, 4x4 SUPPLY BOX AS NEEDED.
3. EXPANSION VALVES: SPORLAN "Q" SERIES STANDARD UNLESS OTHERWISE SPECIFIED.
4. DEFROST CONTROL: REMOTE CASES (N/A, DIGITAL CASE CONTROLLERS AVAILABLE), OPTIONAL CONDENSING UNIT (DIGITAL CASE CONTROLLER).
5. THERMOSTATS & LIQUID LINE SOLENOID VALVES: OPTIONAL.
6. DRAIN: 1 1/2 INCH PVC.
7. SPECIFICATIONS SUBJECT TO CHANGE WITHOUT NOTICE.



AUTHORIZATION (PRINT):		DATE:		 börgeren systems	
SIGNATURE:					
				DATE: 7-23-18	CHECKED BY:
4DR & 7FT OPEN RIGHT					
DATE	REV.	DN:	INCH	DRAWING NUMBER	
REVISION	TOL:			P7588	