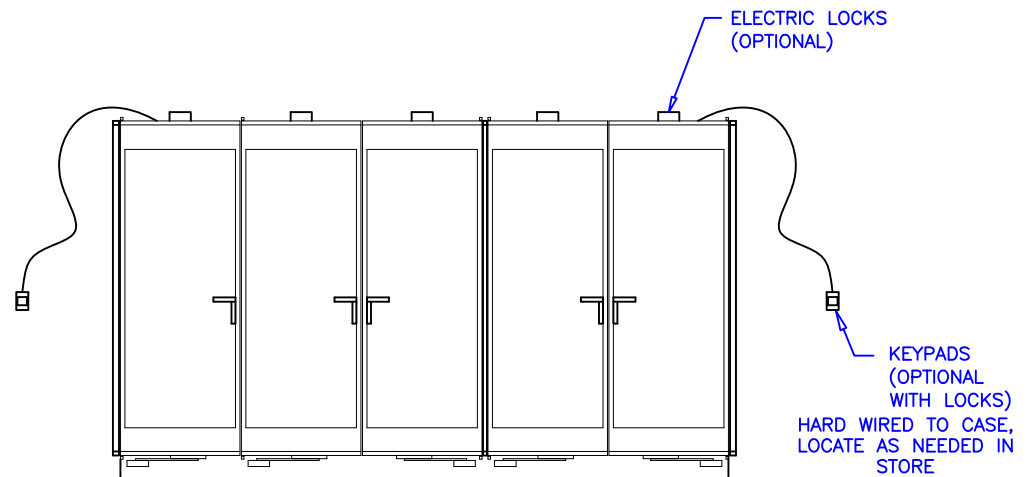
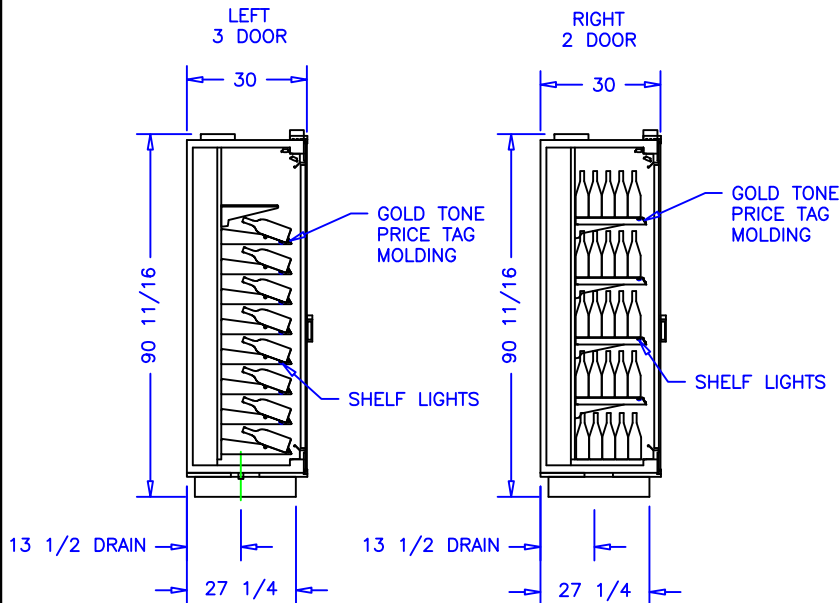
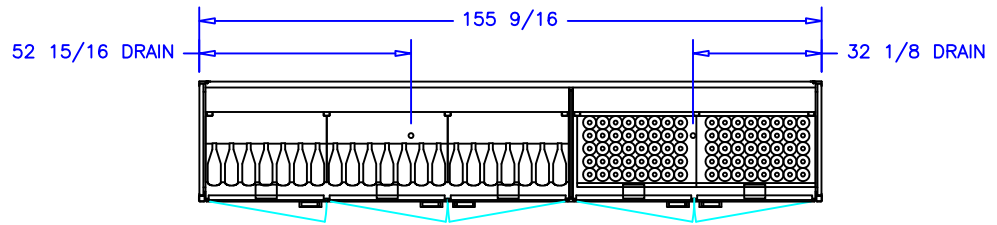


CASE SPECIFICATIONS:

REFRIGERATION:

LEFT LOAD: 1,620 BTU/hr
 RIGHT LOAD: 2,425 BTU/hr
 TOTAL LOAD: 4,445 BTU/hr
 COIL TEMP: 30°F
 SUCTION STUB: 5/8IN ODS
 LIQUID STUB: 3/8IN ODS

ELECTRICAL 115V, 60HZ, 1PH
 EVAP. FANS: 0.60A
 LIGHTS: 6.0A
 TOTAL: 6.7A
 MCA: 15.0A



LEFT CASE SECTION
 BOTTLES PER DOOR: 56
 TOTAL FOR SECTION: 168

RIGHT CASE SECTION
 BOTTLES PER DOOR: 200
 TOTAL FOR SECTION: 400



37X1
 COMMERCIAL REFRIGERATOR
 LESS CONDENSING UNIT

NOTES:

1. OPTIONS NOT SHOWN ON DRAWING SHOULD BE LISTED IN WRITTEN PROPOSAL AND LISTED ON PURCHASE ORDER.
2. ELEC. CONNECTION: 115V/230V, 4x4 SUPPLY BOX AS NEEDED.
3. EXPANSION VALVES: SPORLAN "Q" SERIES STANDARD UNLESS OTHERWISE SPECIFIED.
4. DEFROST CONTROL: REMOTE CASES (N/A, DIGITAL CASE CONTROLLERS AVAILABLE), OPTIONAL CONDENSING UNIT (DIGITAL CASE CONTROLLER).
5. THERMOSTATS & LIQUID LINE SOLENOID VALVES: OPTIONAL.
6. DRAIN: 1 1/2 INCH PVC.
7. SPECIFICATIONS SUBJECT TO CHANGE WITHOUT NOTICE.

AUTHORIZATION (PRINT):	DATE:			SCALE: 1:48	DRAWN BY: D HUNT
				DATE: 4-16-13	CHECKED BY:
		5DR WINE TALL			
DATE	REV.	DIM:	INCH	DRAWING NUMBER	
REVISION		TOL:		P6421	