

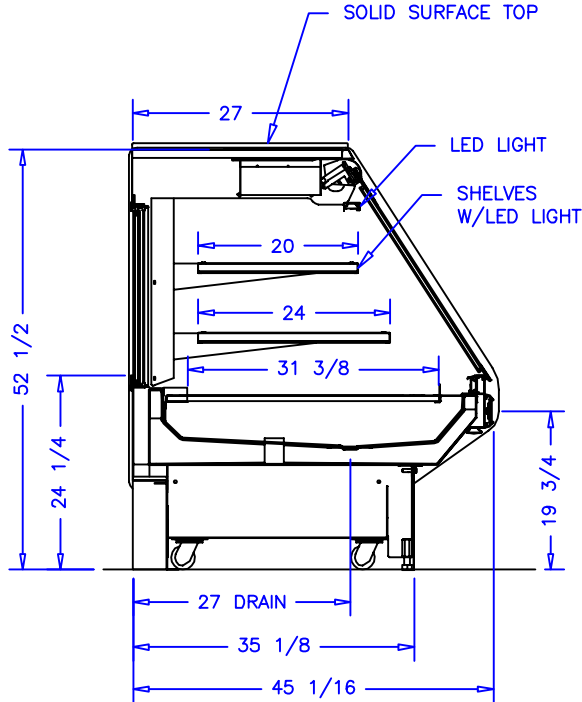
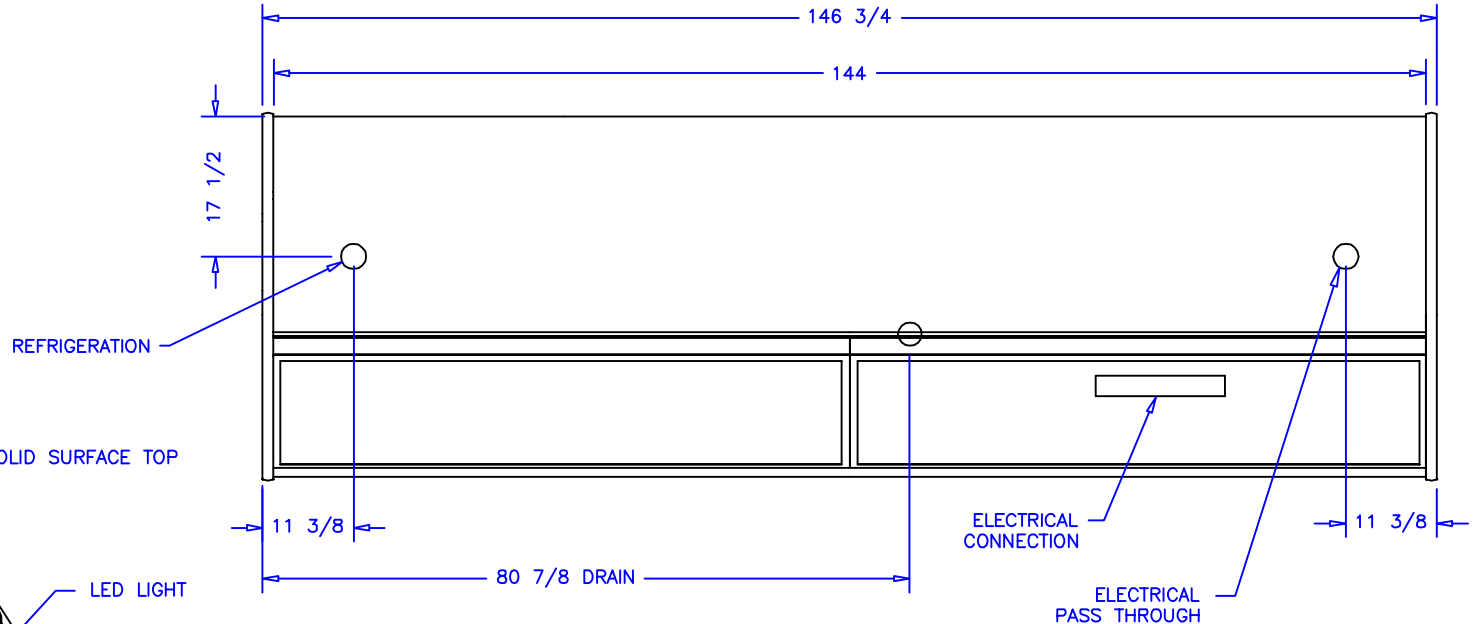
CASE SPECIFICATIONS:

REFRIGERATION:
CASE LOAD: 5,400 BTU/hr
COIL TEMP: 22° F
LIQUID STUB: 3/8IN ODS
SUCTION STUB: 5/8IN ODS

AIR DISCHARGE:
30° F @ 250 FPM

INITIAL DEFROST SETTING
6 PER DAY @ 30 MIN. EACH


ELECTRICAL 115VAC, 60HZ, 1PH.
ECM EVAP. FANS: 1.2A
LED LIGHTS: 2.4A
TOTAL: 3.6A
MCA: 15.0A



NOTES:

1. OPTIONS NOT SHOWN ON DRAWING SHOULD BE LISTED IN WRITTEN PROPOSAL AND LISTED ON PURCHASE ORDER.
2. ELEC. CONNECTION: 115V/230V, 4x4 SUPPLY BOX AS NEEDED.
3. EXPANSION VALVES: SPORLAN "Q" SERIES STANDARD UNLESS OTHERWISE SPECIFIED.
4. DEFROST CONTROL: REMOTE CASES (N/A, DIGITAL CASE CONTROLLERS AVAILABLE), OPTIONAL CONDENSING UNIT (DIGITAL CASE CONTROLLER).
5. THERMOSTATS & LIQUID LINE SOLENOID VALVES: OPTIONAL.
6. DRAIN: 1 1/2 INCH PVC.
7. SPECIFICATIONS SUBJECT TO CHANGE WITHOUT NOTICE.



AUTHORIZATION (PRINT):		DATE:		 börgeren systems		DRAWN BY: D HUNT	
SIGNATURE:						CHECKED BY:	
		SCALE: 1:24		12FT DELI BAKERY FG			
		DATE: 9-17-14		DRAWING NUMBER			
		DATE		REV.		INCH	
		REVISION		TOL:		P6711	