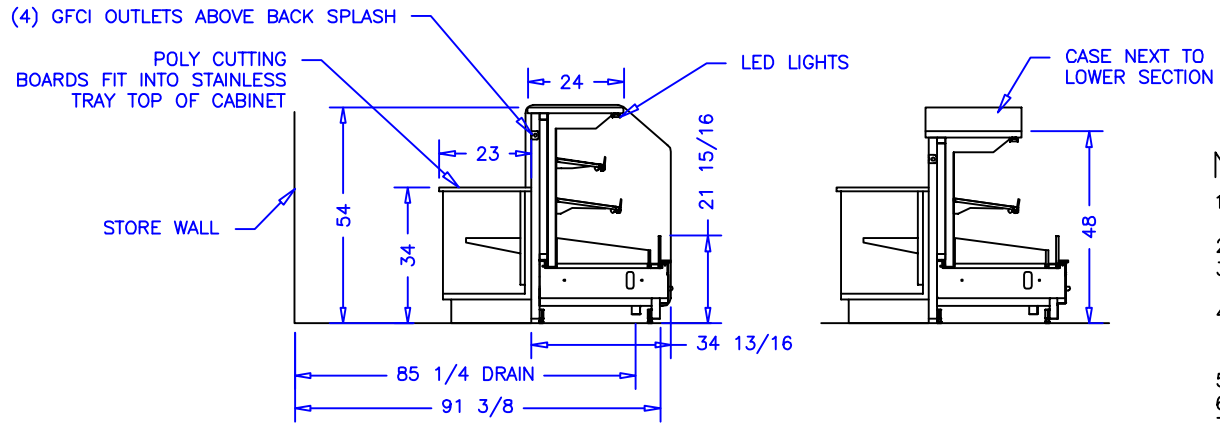


CASE SPECIFICATIONS:


REFRIGERATION
 LOAD: 16,400 BTU/hr
 COIL TEMP: 22° F
 LIQUID STUBS: 3/8IN ODS
 SUCTION STUBS: 5/8IN ODS

ELECTRICAL 115VAC, 60HZ, 1PH.
 EVAP. FANS: 4.5A
 LIGHTS: 3.6A
 TOTAL: 8.1A
 MCA: 15.0A



- NOTES:**
1. OPTIONS NOT SHOWN ON DRAWING SHOULD BE LISTED IN WRITTEN PROPOSAL AND LISTED ON PURCHASE ORDER.
 2. ELEC. CONNECTION: 115V/230V, 4x4 SUPPLY BOX AS NEEDED.
 3. EXPANSION VALVES: SPORLAN "Q" SERIES STANDARD UNLESS OTHERWISE SPECIFIED.
 4. DEFROST CONTROL: REMOTE CASES (N/A, DIGITAL CASE CONTROLLERS AVAILABLE), OPTIONAL CONDENSING UNIT (DIGITAL CASE CONTROLLER).
 5. THERMOSTATS & LIQUID LINE SOLENOID VALVES: OPTIONAL.
 6. DRAIN: 1 1/2 INCH PVC.
 7. SPECIFICATIONS SUBJECT TO CHANGE WITHOUT NOTICE.



AUTHORIZATION (PRINT):		DATE:		 börger systems	
SIGNATURE:					
		SCALE: 1:48	DRAWN BY: D HUNT		
		DATE: 8-11-14	CHECKED BY:		
PRODUCE PREP W3-4-3W					
DATE	REV.	DR:	INCH	DRAWING NUMBER	
REVISION	TOL:			P6699	