

LEFT CASE SPECIFICATIONS:

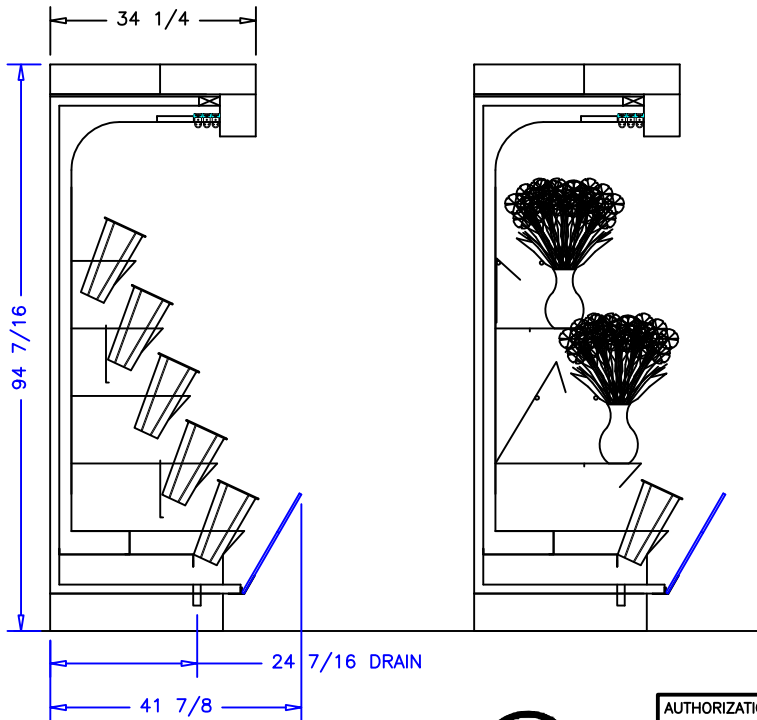
REFRIGERATION
 LOAD: 6,800 BTU/hr
 COIL TEMP: 22° F
 LIQUID STUB: 3/8IN ODS
 SUCTION STUB: 1/2IN ODS

ELECTRICAL 115V, 60HZ, 1PH.
 LIGHTS: 2.24A
 EVAP. FANS: 0.26A
 TOTAL: 2.5A
 MCA: 15.0A

RIGHT CASE SPECIFICATIONS:

REFRIGERATION
 LOAD: 6,800 BTU/hr
 COIL TEMP: 22° F
 LIQUID STUB: 3/8IN ODS
 SUCTION STUB: 1/2IN ODS


ELECTRICAL 115V, 60HZ, 1PH.
 LIGHTS: 2.24A
 EVAP. FANS: 0.26A
 TOTAL: 2.5A
 MCA: 15.0A



NOTES:

1. OPTIONS NOT SHOWN ON DRAWING SHOULD BE LISTED IN WRITTEN PROPOSAL AND LISTED ON PURCHASE ORDER.
2. ELEC. CONNECTION: 115V/230V, 4x4 SUPPLY BOX AS NEEDED.
3. EXPANSION VALVES: SPORLAN "Q" SERIES STANDARD UNLESS OTHERWISE SPECIFIED.
4. DEFROST CONTROL: REMOTE CASES (N/A, DIGITAL CASE CONTROLLERS AVAILABLE), OPTIONAL CONDENSING UNIT (DIGITAL CASE CONTROLLER).
5. THERMOSTATS & LIQUID LINE SOLENOID VALVES: OPTIONAL.
6. DRAIN: 1 1/2 INCH PVC.
7. SPECIFICATIONS SUBJECT TO CHANGE WITHOUT NOTICE.



AUTHORIZATION (PRINT):		DATE:		 börgeren systems		DRAWN BY: D HUNT	
SIGNATURE:						CHECKED BY:	
				SCALE: 1:32			
				DATE: 6-11-08			
				12FT FLOWER BASKET			
DATE	REV.	DWG.	INCH			DRAWING NUMBER	
REVISION	TOL:					P5432	