

CASE SPECIFICATIONS:

REFRIGERATION

LOAD: 5,400 BTU/hr
 SUCTION TEMP: 25° F
 LIQUID LINE: 3/8IN ODS
 SUCTION LINE: 1/2IN ODS

ELECTRICAL 115V, 60HZ, 1PH.

LIGHTS: 2.23A
 TOTAL: 2.23A
 MCA: 15.0A

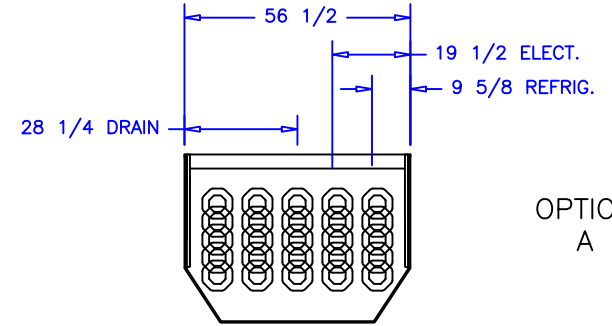
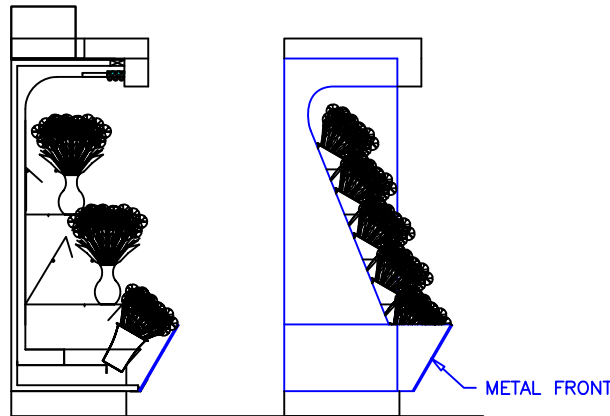
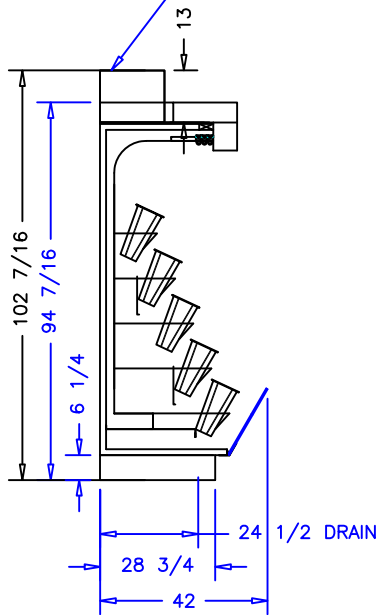
ELECTRICAL 115V, 60HZ, 1PH.

EVAP. FANS: 0.26A
 COND. PUMP: 1.00A
 TOTAL: 1.26A
 MCA: 15.0A

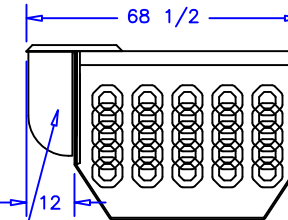
ELECTRICAL 230V, 60HZ, 1PH.

3/4HP COND. UNIT: 6.10A
 CONDENSATE PAN: 7.20A
 TOTAL: 13.3A
 MCA: 16.0A

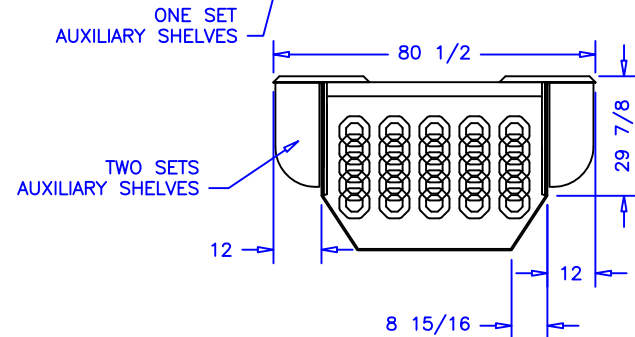
OPTIONAL CONDENSING UNIT



OPTION A




OPTION B



OPTION C

NOTES:

1. OPTIONS NOT SHOWN ON DRAWING SHOULD BE LISTED IN WRITTEN PROPOSAL AND LISTED ON PURCHASE ORDER.
2. ELEC. CONNECTION: 115V/230V, 4x4 SUPPLY BOX AS NEEDED.
3. EXPANSION VALVES: SPORLAN "Q" SERIES STANDARD UNLESS OTHERWISE SPECIFIED.
4. DEFROST CONTROL: REMOTE CASES (N/A, DIGITAL CASE CONTROLLERS AVAILABLE), OPTIONAL CONDENSING UNIT (DIGITAL CASE CONTROLLER).
5. THERMOSTATS & LIQUID LINE SOLENOID VALVES: OPTIONAL.
6. DRAIN: 1 1/2 INCH PVC.
7. SPECIFICATIONS SUBJECT TO CHANGE WITHOUT NOTICE.

AUTHORIZATION (PRINT):		DATE:		 börger systems	
SIGNATURE:					
				DATE: 1-22-08	CHECKED BY:
5FT FLOWER BASKET W/SHLV					
DATE	REV.	DI:	INCH	DRAWING NUMBER	
REVISION	TOL:			P5304	