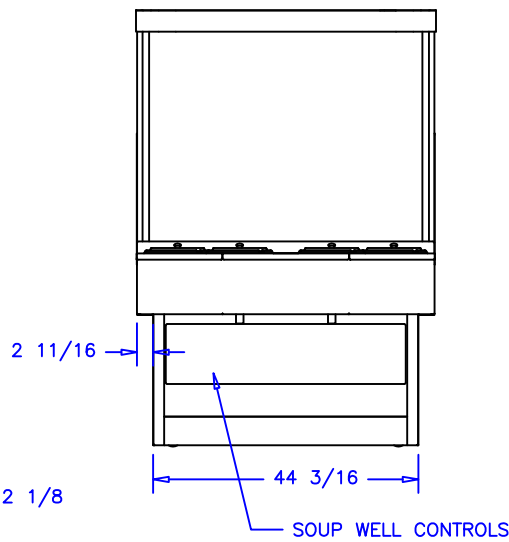
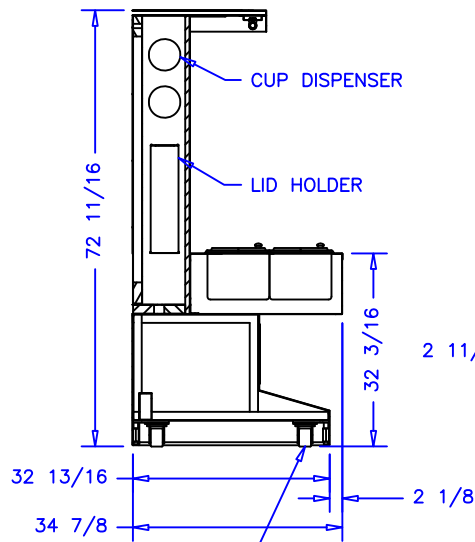


SOUP HUTCH  
SPECIFICATIONS:


ELECTRICAL 115VAC, 60HZ, 1PH.  
LIGHT BALLAST: .37A  
SOUP WELLS: 18.0A  
TOTAL: 18.37A  
MCA: 30.0A



CASTERS WITH LEVELER LEGS

NOTES:

1. OPTIONS NOT SHOWN ON DRAWING SHOULD BE LISTED IN WRITTEN PROPOSAL AND LISTED ON PURCHASE ORDER.
2. ELEC. CONNECTION: 115V/230V, 4x4 SUPPLY BOX AS NEEDED.
3. EXPANSION VALVES: SPORLAN "Q" SERIES STANDARD UNLESS OTHERWISE SPECIFIED.
4. DEFROST CONTROL: REMOTE CASES (N/A, DIGITAL CASE CONTROLLERS AVAILABLE), OPTIONAL CONDENSING UNIT (DIGITAL CASE CONTROLLER).
5. THERMOSTATS & LIQUID LINE SOLENOID VALVES: OPTIONAL.
6. DRAIN: 1 1/2 INCH PVC.
7. SPECIFICATIONS SUBJECT TO CHANGE WITHOUT NOTICE.

AUTHORIZATION (PRINT):		DATE:		 <b>börger systems</b>		SCALE: 1:32		DRAWN BY: A. BESIC	
SIGNATURE:						DATE: 3-22-07		CHECKED BY:	
		2-18-11 DRH		4' SOUP HUTCH BG4SH					
		4-8-07 DRH							
		DATE REV. DIM. INCH		DRAWING NUMBER					
		REVISION TOL:		P5069					