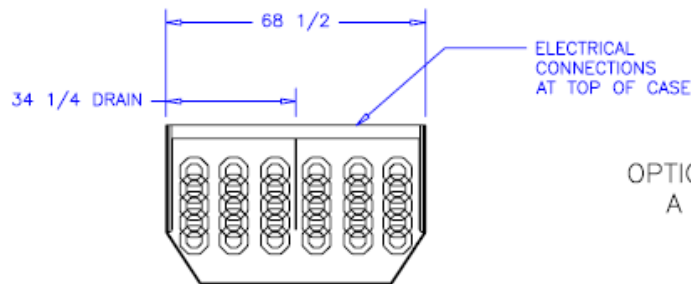
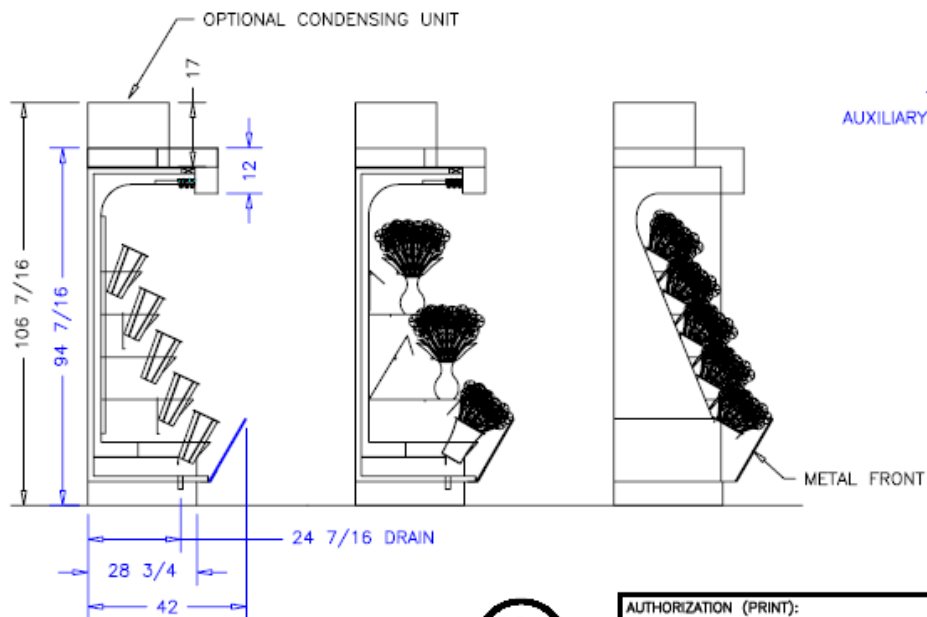


CASE SPECIFICATIONS:

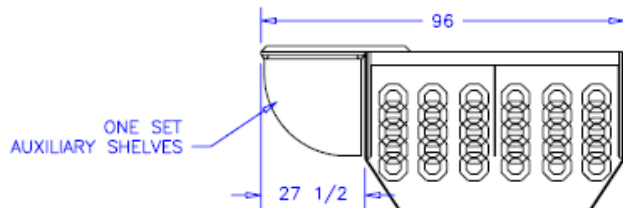
REFRIGERATION  
 LOAD: 6,800 BTU/hr  
 SUCTION TEMP: 20° F  
 LIQUID LINE: 3/8IN ODS  
 SUCTION LINE: 1/2IN ODS

ELECTRICAL 115V, 60HZ, 1PH.  
 LIGHTS: 2.24A  
 EVAP. FANS: 0.26A  
 COND. PUMP: 1.0A  
 TOTAL: 3.5A  
 MCA: 15.0A

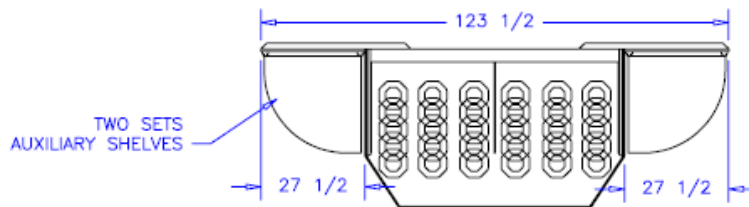
ELECTRICAL 230V, 60HZ, 1PH.  
 CONDENSING UNIT: 7.7A  
 CONDENSATE PAN: 7.2A  
 TOTAL: 14.9A  
 MCA: 18.0A



OPTION A



OPTION B



OPTION C

NOTES:

1. OPTIONS NOT SHOWN ON DRAWING SHOULD BE LISTED IN WRITTEN PROPOSAL AND LISTED ON PURCHASE ORDER.
2. ELEC. CONNECTION: 115V/230V, 4x4 SUPPLY BOX AS NEEDED.
3. EXPANSION VALVES: SPORLAN "Q" SERIES STANDARD UNLESS OTHERWISE SPECIFIED.
4. DEFROST CONTROL: REMOTE CASES (N/A, DIGITAL CASE CONTROLLERS AVAILABLE), OPTIONAL CONDENSING UNIT (DIGITAL CASE CONTROLLER).
5. THERMOSTATS & LIQUID LINE SOLENOID VALVES: OPTIONAL.
6. DRAIN: 1 1/2 INCH PVC.
7. SPECIFICATIONS SUBJECT TO CHANGE WITHOUT NOTICE.



AUTHORIZATION (PRINT):  
 DATE:

SIGNATURE:  
 DATE REV. DIM. INCH  
 REVISION TOL:

		SCALE: 1:48	DRAWN BY: D HUNT
		DATE: 2-15-06	CHECKED BY:
10-5-06 DRH	6FT FLOWER BASKET		
9-19-06 DRH			
			DRAWING NUMBER
			P4806A