

CASE SPECIFICATIONS:

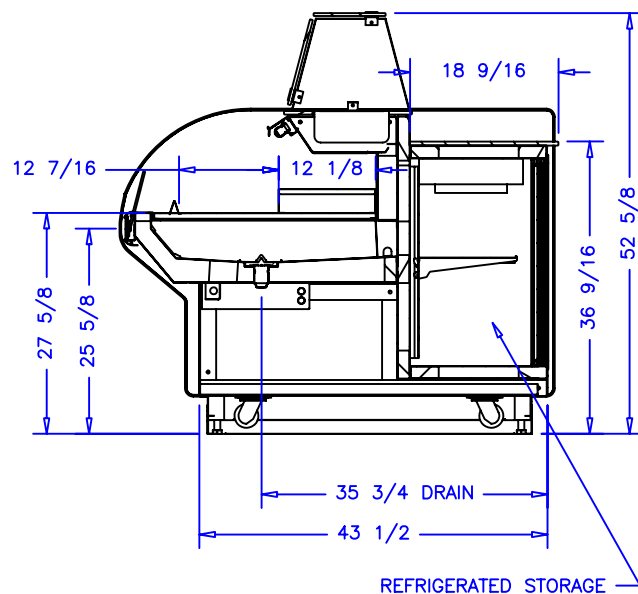
REFRIGERATION

LOAD: 11,340 BTU/hr
 SUCTION TEMP: 20° F
 LIQUID LINE: 3/8IN ODS
 SUCTION LINE: 5/8IN ODS

ELECTRICAL 115VAC, 60HZ, 1PH.

EVAP. FANS: 4.16A
 LIGHT BALLAST: 1.5A
 TOTAL: 5.66A
 MCA: 15.0A

ADDITIONAL CONNECTIONS FOR:
 LIQUID LINE SOLENOID VALVE
 DISCHARGE AIR PROBE
 REAR FAN CONTROL RELAY




PANS: (20) 1/4 SIZE W/LIDS INCLUDED
 STANDARD

WELL SIZE: (2) 9 9/16" x 62 7/8"

NOTES:

1. OPTIONS NOT SHOWN ON DRAWING SHOULD BE LISTED IN WRITTEN PROPOSAL AND LISTED ON PURCHASE ORDER.
2. ELEC. CONNECTION: 115V/230V, 4x4 SUPPLY BOX AS NEEDED.
3. EXPANSION VALVES: SPORLAN "Q" SERIES STANDARD UNLESS OTHERWISE SPECIFIED.
4. DEFROST CONTROL: REMOTE CASES (N/A, DIGITAL CASE CONTROLLERS AVAILABLE), OPTIONAL CONDENSING UNIT (DIGITAL CASE CONTROLLER).
5. THERMOSTATS & LIQUID LINE SOLENOID VALVES: OPTIONAL.
6. DRAIN: 1 1/2 INCH PVC.
7. SPECIFICATIONS SUBJECT TO CHANGE WITHOUT NOTICE.

| | | | | | |
|------------------------|--|-------------|------|---|----------------|
| AUTHORIZATION (PRINT): | | DATE: | |  börger systems | |
| SIGNATURE: | | | | | |
| | | | | SCALE: 1:24 | DRAWN BY: DWT |
| | | | | DATE: 10-21-03 | CHECKED BY: |
| | | 3-20-06 DRH | | 12 FOOD PREP HIGH BG12PH | |
| | | DATE | REV. | DIM: INCH | DRAWING NUMBER |
| | | REVISION | TOL: | | P4258A |