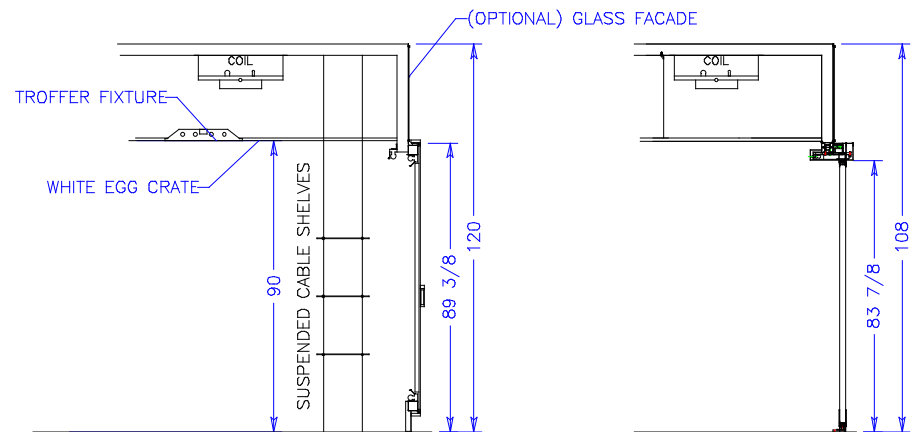


REFRIGERATION: COIL: (1) RUSSELL CTA 56-208.  
 20,100 BTU/hr @ 20°F  
 Ø1/2IN ODS LIQUID.  
 Ø7/8IN ODS SUCTION.

TOP AREA: 123.8 SQR FEET.

ELECT. LOADS: 115V, 14.06A, 60HZ, 1PH.  
 ALL ELECT LOADS MAXIMUM AND INCLUDE THE FOLLOWING:  
 (1) CTA COIL 5.5A, (1) WOD BALLAST 4.8,  
 (4) TROFFER BALLASTS 3.76A.

NFM W/ROTATING CAROUSEL  
 ELECT. LOADS: 115V, 0.75A, 60HZ, 1PH.



WALL OF DOORS

BROWSE THRU

NOTES:

1. DOORS: LEFT HAND HINGED STANDARD. RIGHT HAND OPTIONAL. (NO HEATERS REQ'D).
2. LIGHTS: HIGH OUTPUT/COOL WHITE STANDARD. SPX35 AVAIL. IN LIMITED BULB LENGTHS.
3. ELEC. CONNECTION: TOP MOUNTED 115V/230V, 4X4 SUPPLY BOX AS NEEDED.
4. REFG: STUBBED OUT TOP/REAR OF CASE.
5. COMPUTERIZED CASE CONTROLLERS: OPTIONAL.
6. EXPANSION VALVES: SPORLAN "Q" SERIES STANDARD UNLESS OTHERWISE SPECIFIED.
7. DEFROST CONTROL: RMT. CASE (N/A). OPTIONAL C.U. (PRESSURE CONTROL SWITCH).
8. THERMOSTATS & LIQUID LINE SOLENOID VALVES: OPTIONAL.
9. SPECIFICATIONS SUBJECT TO CHANGE WITHOUT NOTICE.

<b>börgeren systems</b>			
SCALE: 1:48		DRAWN BY: D. HUNT	
DATE: 12-2-99		CHECKED BY:	
4DR WOD W/1DR BROWSE CSRV			
DATE:	REV.	DIM: INCHES	DRAWING NUMBER
REVISION	TOL: ±1/32		P3236B