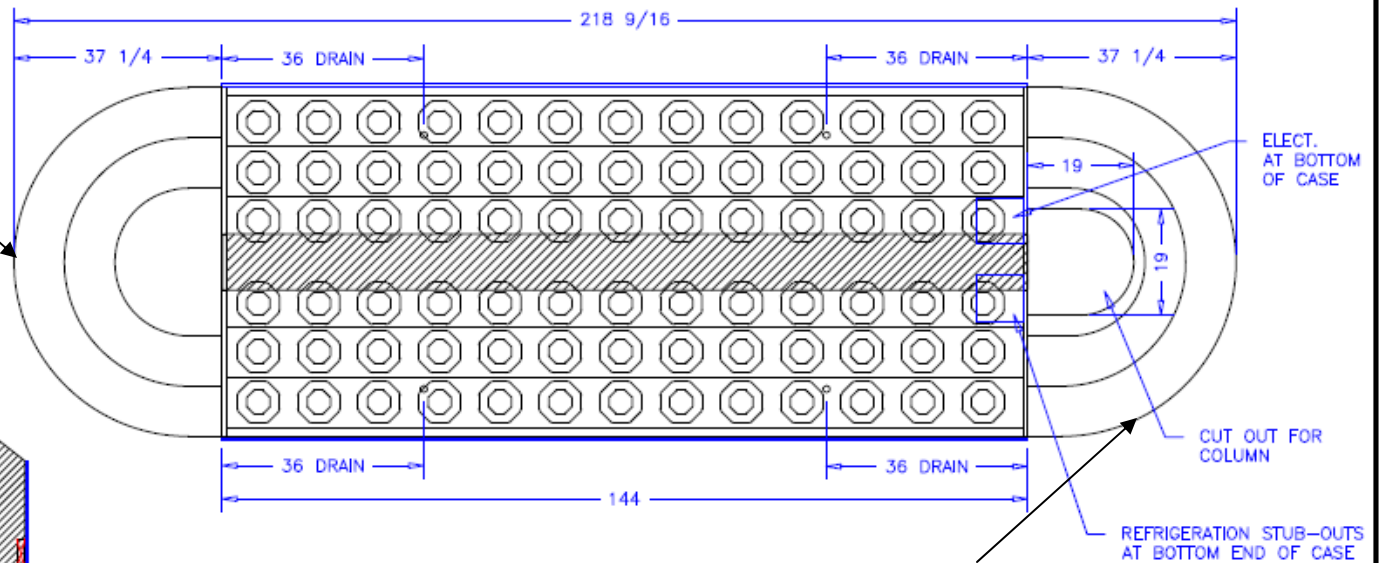


Dry Step Displays are an option at additional cost.

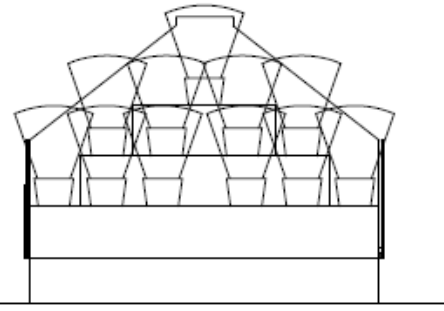
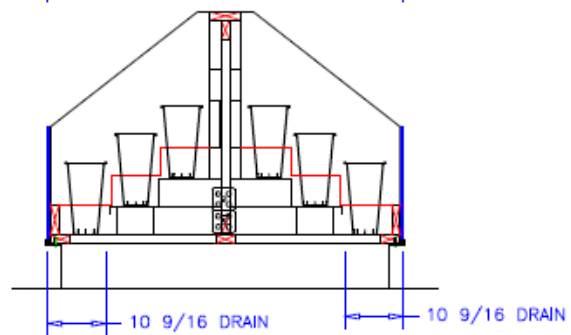
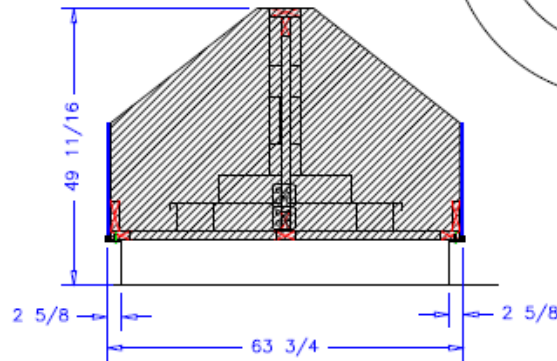


ELECT. AT BOTTOM OF CASE

CUT OUT FOR COLUMN

REFRIGERATION STUB-OUTS AT BOTTOM END OF CASE

Dry Step Displays are an option at additional cost.



CASE SPECIFICATIONS:

REFRIGERATION  
LOAD: 13,200 BTU/hr  
COIL TEMP: 22° F  
LIQUID STUB: 3/8IN ODS  
SUCTION STUB: 1/2IN ODS

ELECTRICAL 115VAC, 60HZ, 1PH.  
EVAP. FANS: .52A  
TOTAL: .52A  
MCA: 15.0A



NOTES:

1. OPTIONS NOT SHOWN ON DRAWING SHOULD BE LISTED IN WRITTEN PROPOSAL AND LISTED ON PURCHASE ORDER.
2. ELEC. CONNECTION: 115V/230V, 4x4 SUPPLY BOX AS NEEDED.
3. EXPANSION VALVES: SPORLAN "Q" SERIES STANDARD UNLESS OTHERWISE SPECIFIED.
4. DEFROST CONTROL: REMOTE CASES (N/A, DIGITAL CASE CONTROLLERS AVAILABLE), OPTIONAL CONDENSING UNIT (DIGITAL CASE CONTROLLER).
5. THERMOSTATS & LIQUID LINE SOLENOID VALVES: OPTIONAL.
6. DRAIN: 1 1/2 INCH PVC.
7. SPECIFICATIONS SUBJECT TO CHANGE WITHOUT NOTICE.

AUTHORIZATION (PRINT):	DATE:			SCALE: 1:32	DRAWN BY: D. HUNT
SIGNATURE:				DATE: 6-17-08	CHECKED BY:
		6-12-09 DRH	12FT LPM FIELD OF FLOWERS		
		12-8-08 DRH			
		11-24-08 DRH			
DATE:	REV:	BY:	INCH:	DRAWING NUMBER	
REVISION:	TOL:			P5435	