

CASE SPECIFICATIONS:

REFRIGERATION

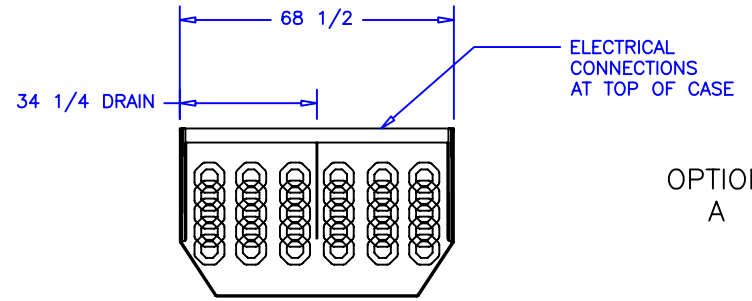
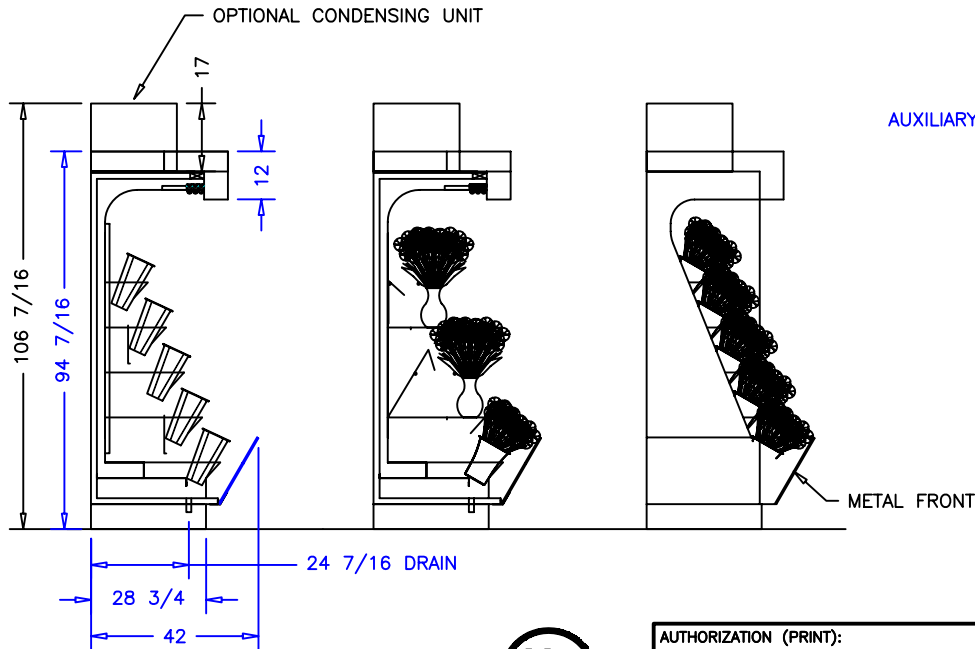
LOAD: 6,800 BTU/hr
 SUCTION TEMP: 20° F
 LIQUID LINE: 3/8IN ODS
 SUCTION LINE: 1/2IN ODS

ELECTRICAL 115V, 60HZ, 1PH.

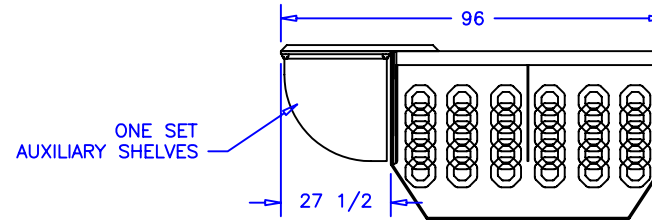
LIGHTS: 2.24A
 EVAP. FANS: 0.26A
 COND. PUMP: 1.0A
 TOTAL: 3.5A
 MCA: 15.0A

ELECTRICAL 230V, 60HZ, 1PH.

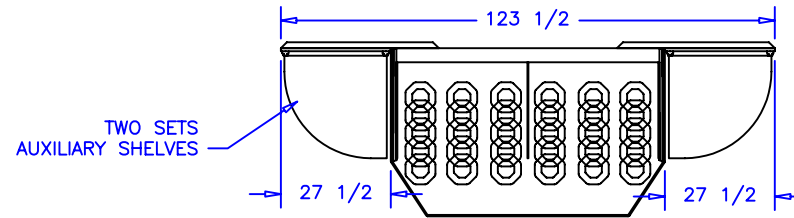
CONDENSING UNIT: 7.7A
 CONDENSATE PAN: 7.2A
 TOTAL: 14.9A
 MCA: 18.0A



OPTION A



OPTION B




OPTION C

NOTES:

1. OPTIONS NOT SHOWN ON DRAWING SHOULD BE LISTED IN WRITTEN PROPOSAL AND LISTED ON PURCHASE ORDER.
2. ELEC. CONNECTION: 115V/230V, 4x4 SUPPLY BOX AS NEEDED.
3. EXPANSION VALVES: SPORLAN "Q" SERIES STANDARD UNLESS OTHERWISE SPECIFIED.
4. DEFROST CONTROL: REMOTE CASES (N/A, DIGITAL CASE CONTROLLERS AVAILABLE), OPTIONAL CONDENSING UNIT (DIGITAL CASE CONTROLLER).
5. THERMOSTATS & LIQUID LINE SOLENOID VALVES: OPTIONAL.
6. DRAIN: 1 1/2 INCH PVC.
7. SPECIFICATIONS SUBJECT TO CHANGE WITHOUT NOTICE.



AUTHORIZATION (PRINT):		DATE:		 börgeren systems		SCALE: 1:48		DRAWN BY: D HUNT	
SIGNATURE:						DATE: 2-15-06		CHECKED BY:	
10-5-06 DRH		9-19-06 DRH		6FT FLOWER BASKET W/SHLV					
DATE		REV.		DIM:		INCH		DRAWING NUMBER	
REVISION		TOL:						P4806A	