

REFRIGERATION:  
 9,650 BTU/hr @ 20°F  
 ø1/2IN ODS LIQUID.  
 ø7/8IN ODS SUCTION.

TOP AREA: 59.5 SQR FEET.

ELECT. LOADS: 115V, 4.56A, 60HZ, 1PH.  
 ALL ELECT LOADS MAXIMUM AND INCLUDE THE FOLLOWING:

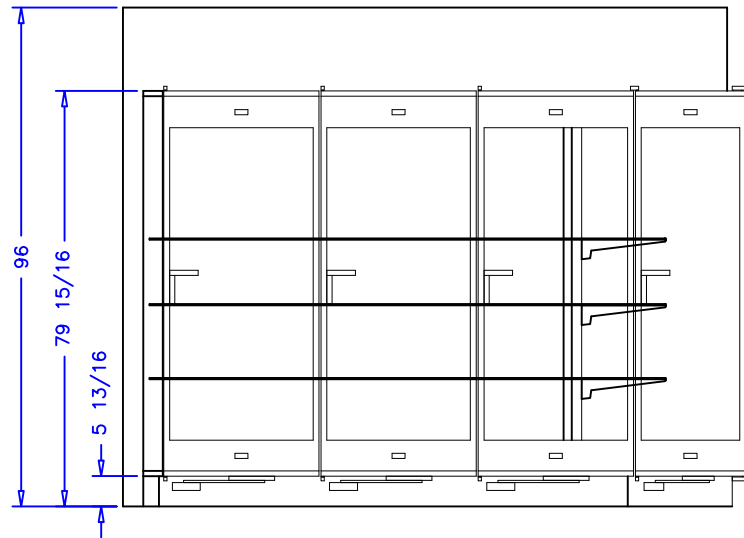
- (4) MERCH. BALLASTS 3.76A,
- (1) STORAGE BALLAST 0.80

WALKIN COOLER INFORMATION:

- (1) LIGHT SWITCH ADJACENT SERVICE DOOR HANDLE.
- (1) THERMOMETER ABOVE LIGHT SWITCH.
- (1) VENT ABOVE THE SERVICE DOOR.


DISPLAY IN FORMATION:

- (4) BACK PANELS ON THE DIVIDING WALL ARE HINGED FOR REAR STOCKING.
- (12) TEMPERED GLASS SHELVES ARE HEIGHT ADJUSTABLE.



NOTES:

1. OPTIONS NOT SHOWN ON DRAWING SHOULD BE LISTED IN WRITTEN PROPOSAL AND LISTED ON PURCHASE ORDER.
2. ELEC. CONNECTION: 115V/230V, 4x4 SUPPLY BOX AS NEEDED.
3. EXPANSION VALVES: SPORLAN "Q" SERIES STANDARD UNLESS OTHERWISE SPECIFIED.
4. DEFROST CONTROL: REMOTE CASES (N/A, DIGITAL CASE CONTROLLERS AVAILABLE), OPTIONAL CONDENSING UNIT (DIGITAL CASE CONTROLLER).
5. THERMOSTATS & LIQUID LINE SOLENOID VALVES: OPTIONAL.
6. DRAIN: 1 INCH NATIONAL PIPE STRAIGHT THREAD.
7. SPECIFICATIONS SUBJECT TO CHANGE WITHOUT NOTICE.

		 <b>börger systems</b>	
	SCALE: 1:24	DRAWN BY: D. HUNT	
	DATE: 6-1-04	CHECKED BY: NAME	
5DR WOD WRAP			
DATE	REV.	DIM: INCH	DRAWING NUMBER
REVISION		TOL: ±1/32	P4461B