

CASE SPECIFICATIONS:

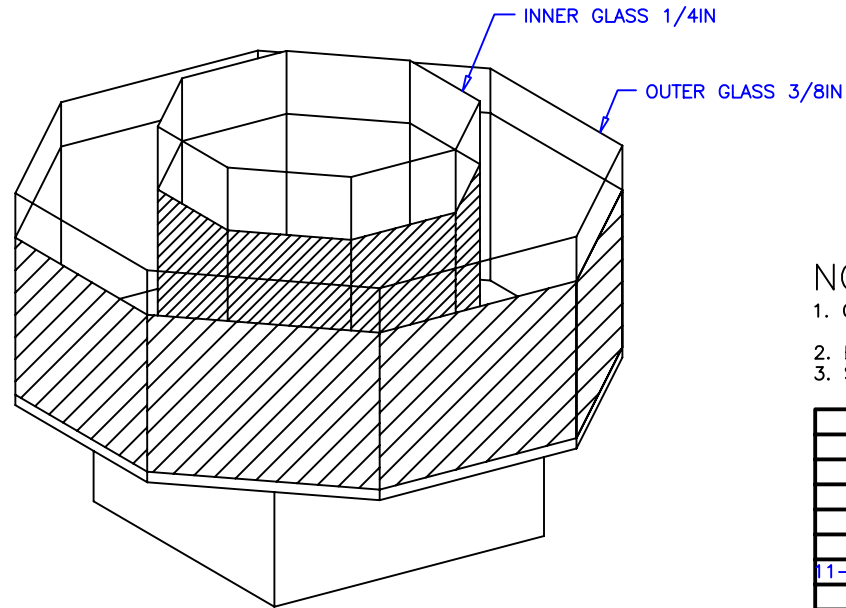
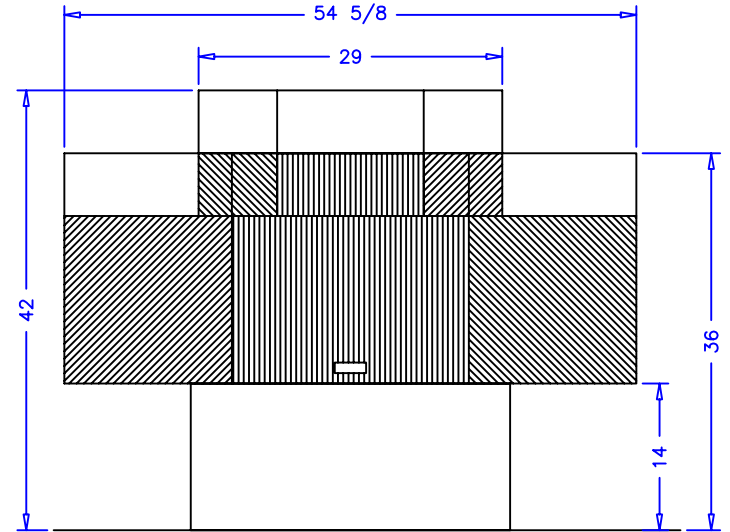
REFRIGERATION
 LOAD: 3,200 BTU/hr
 SUCTION TEMP: 20° F
 LIQUID LINE: 3/8IN ODS
 SUCTION LINE: 1/2IN ODS

ELECTRICAL 115VAC, 60HZ,
 1PH.
 EVAP. FANS: .13A
 1/2HP COND. UNIT: 11.9A
 TOTAL: 12.0A

SHIPPING WEIGHT: 694 LBS


EQUIPPED WITH CASTERS FOR
 PORTABILITY

CONDENSATE EVAP SYSTEM
 INCLUDED



NOTES:

1. OPTIONS NOT SHOWN ON DRAWING SHOULD BE LISTED IN WRITTEN PROPOSAL AND LISTED ON PURCHASE ORDER.
2. ELEC. CONNECTION: BOTTOM MOUNTED 115VAC CORD AND PLUG.
3. SPECIFICATIONS SUBJECT TO CHANGE WITHOUT NOTICE.

		 börger systems	
		SCALE: 1:12	DRAWN BY: J MAUK
		DATE: 8-6-94	CHECKED BY:
11-17-03 DRH		OPEN ISLAND	
DATE	REV.	DIM: INCH	DRAWING NUMBER
REVISION	TOL:		P1651B