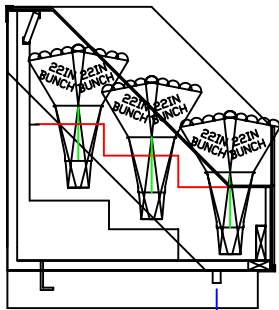


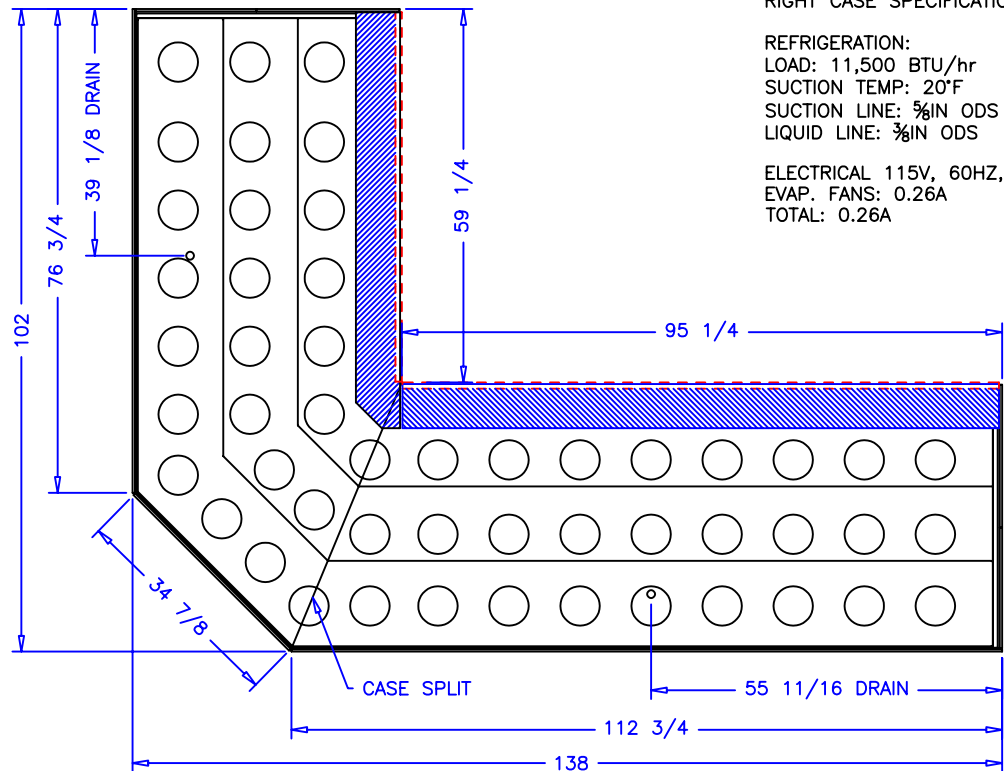
LEFT CASE SPECIFICATIONS:

REFRIGERATION:
 LOAD: 12,600 BTU/hr
 SUCTION TEMP: 20°F
 SUCTION LINE: 5/8" ODS
 LIQUID LINE: 3/8" ODS

ELECTRICAL 115V, 60HZ, 1PH
 EVAP. FANS: 0.26A
 TOTAL: 0.26A



33 3/16" NPS DRAIN




RIGHT CASE SPECIFICATIONS:

REFRIGERATION:
 LOAD: 11,500 BTU/hr
 SUCTION TEMP: 20°F
 SUCTION LINE: 5/8" ODS
 LIQUID LINE: 3/8" ODS

ELECTRICAL 115V, 60HZ, 1PH
 EVAP. FANS: 0.26A
 TOTAL: 0.26A

NOTES:

1. OPTIONS NOT SHOWN ON DRAWING SHOULD BE STATED IN WRITTEN PROPOSAL AND LISTED ON PURCHASE ORDER.
2. ELECTRICAL CONNECTION: 115V/230V, 4X4 SUPPLY BOX AS NEEDED.
3. EXPANSION VALVES: SPORLAN "Q" SERIES STANDARD UNLESS OTHERWISE SPECIFIED.
4. DEFROST CONTROL: REMOTE CASES (N/A, DIGITAL CASE CONTROLLERS AVAILABLE), OPTIONAL CONDENSING UNIT (DIGITAL CASE CONTROLLER).
5. THERMOSTATS & LIQUID LINE SOLENOID VALVES: OPTIONAL.
6. DRAIN: 1 INCH NATIONAL PIPE STRAIGHT THREAD.
7. SPECIFICATIONS SUBJECT TO CHANGE WITHOUT NOTICE.

		 börger systems	
SCALE:	1:20	DRAWN BY:	D HUNT
DATE:	1-16-06	CHECKED BY:	NAME
5'8' HP LPM CORNER WRAP			
DATE	REV.	DIM:	INCH
REVISION		TOL:	±1/32
			DRAWING NUMBER P4786B