

DOORED CASE SPECIFICATIONS:

REFRIGERATION

LOAD PER FOOT: 517 BTU/hr
 LOAD: 5,175 BTU/hr
 SUCTION TEMP: 20° F
 LIQUID LINE: 3/8IN ODS
 SUCTION LINE: 5/8IN ODS

ELECTRICAL 115VAC, 60HZ, 1PH.

EVAP. FANS: .26A
 LIGHT BALLAST: 2.22A
 CONDENSATE PUMP: 1.0A
 EVAP. PAN: 3.0A
 TOTAL: 6.48A

ELECTRICAL 230VAC, 60HZ, 1PH.

3/4HP COND. UNIT: 6.1A
 TOTAL: 6.1A
 MCA: 8.8A

OPEN CASE SPECIFICATIONS:

REFRIGERATION

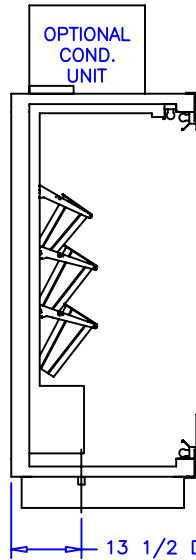
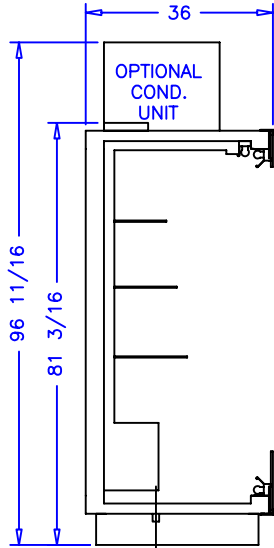
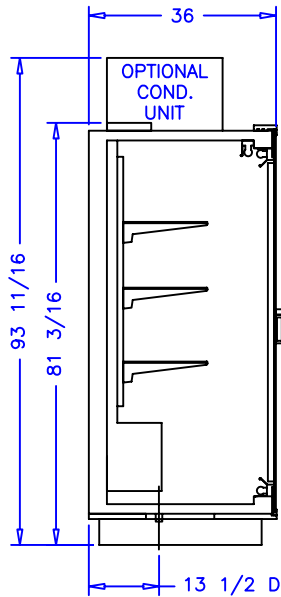
LOAD PER FOOT: 1117 BTU/hr
 LOAD: 4,470 BTU/hr
 SUCTION TEMP: 20° F
 LIQUID LINE: 3/8IN ODS
 SUCTION LINE: 5/8IN ODS

ELECTRICAL 115VAC, 60HZ, 1PH.

EVAP. FANS: .13A
 LIGHT BALLAST: .74A
 CONDENSATE PUMP: 1.0A
 TOTAL: 1.87A

ELECTRICAL 230VAC, 60HZ, 1PH.

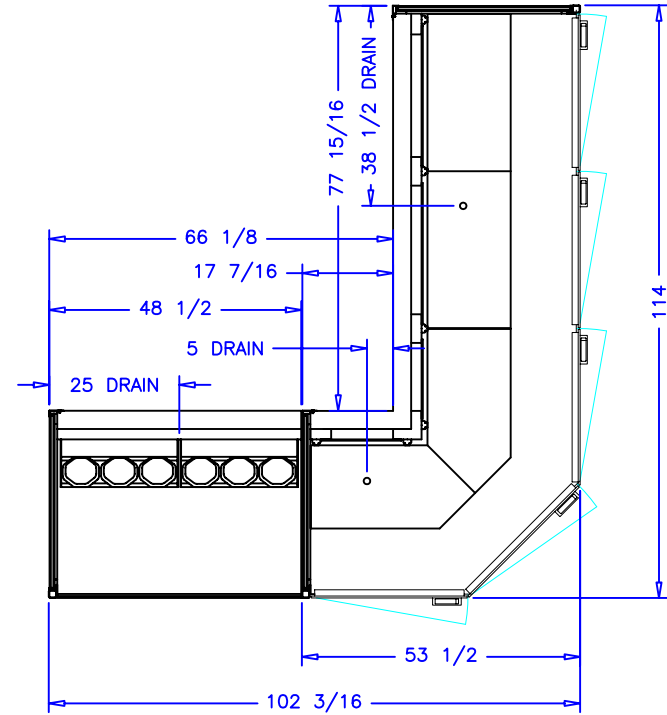
EVAP. PAN: 6.5A
 3/4HP COND. UNIT: 9.9A
 TOTAL: 16.4A



SHELF SPECIFICATIONS:


SLAT WALL CRS SHELVES (6)
 13 INCH VASES (12)
 10 INCH VASES (6)

TEMPERED GLASS SHELVES
 WITH SLAT WALL BRACKETS
 10 INCH BY 24 INCH (2)
 12 INCH BY 24 INCH (2)
 14 INCH BY 24 INCH (2)



NOTES:

1. OPTIONS NOT SHOWN ON DRAWING SHOULD BE LISTED IN WRITTEN PROPOSAL AND LISTED ON PURCHASE ORDER.
2. ELEC. CONNECTION: 115V/230V, 4x4 SUPPLY BOX AS NEEDED.
3. EXPANSION VALVES: SPORLAN "Q" SERIES STANDARD UNLESS OTHERWISE SPECIFIED.
4. DEFROST CONTROL: REMOTE CASES (N/A, DIGITAL CASE CONTROLLERS AVAILABLE), OPTIONAL CONDENSING UNIT (DIGITAL CASE CONTROLLER).
5. THERMOSTATS & LIQUID LINE SOLENOID VALVES: OPTIONAL.
6. DRAIN: 1 INCH NATIONAL PIPE STRAIGHT THREAD.
7. SPECIFICATIONS SUBJECT TO CHANGE WITHOUT NOTICE.

		 börger systems	
		SCALE: 1:24	DRAWN BY: D HUNT
		DATE: 6-30-04	CHECKED BY:
5DR WRAP & 4FT OPEN			
DATE	REV.	DIM: INCH	DRAWING NUMBER
REVISION	TOL:		P4495B