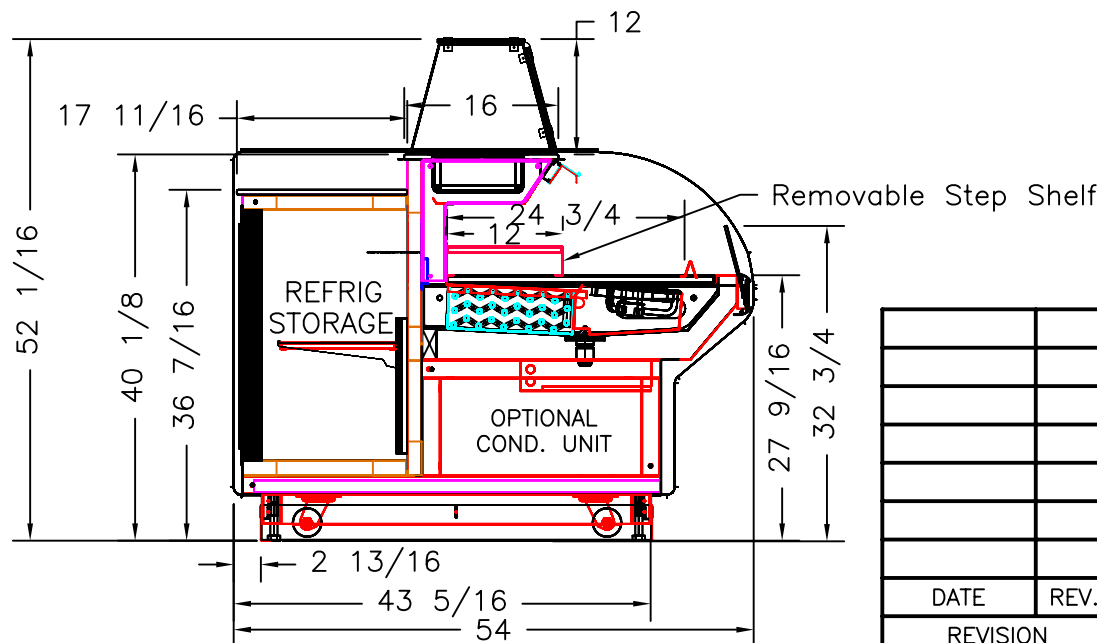


DLI100 8' FOOD PREP HIGH  
SPECIFICATIONS:

REFRIGERATION  
LOAD: 7560 BTU/hr  
SUCTION TEMP: 20° F  
LIQUID LINE: 3/8IN ODS  
SUCTION LINE: 5/8IN ODS

ELECTRICAL 208/230VAC,  
60HZ, 1PH.  
1HP COND. UNIT 7.7A  
CONDENSATE PAN 6.5A  
TOTAL: 14.2A  
MCA: 17.3A

ELECTRICAL 115VAC, 60HZ, 1PH.  
EVAP. FANS: 3.58A  
LIGHT BALLAST: 1.5A  
TOTAL: 5.08A



				börger systems			
		DATE: 10-21-03				CHECKED BY:	
				8' FOOD PREP HIGH		BG8PH	
DATE	REV.	DIM:	INCH			DRAWING NUMBER	
REVISION		TOL: ±1/32				P4256A	